

FEATURE FILMS

A MATTER OF FAITH—A college girl in her freshman year has her beliefs challenged when she takes a course in biology that investigates the claims of evolution. (US 89 min) Tue/Fri/Sat

BEYOND THE MASK—A British East India Trading Company assassin seeks to redeem his past by thwarting a plot against a young nation's hope for freedom. (US 103 min) Wed/Sat

CINDERELLA—When her father unexpectedly passes away, young Ella finds herself at the mercy of her cruel stepmother and her scheming step-sisters. Never one to give up hope, Ella's fortunes begin to change after meeting a dashing stranger. (US 105 min) Fri/Sat/Sun

DO YOU BELIEVE—When a pastor is shaken by the visible faith of a street-corner preacher, he is reminded that true belief always requires action. His response ignites a journey that impacts everyone it touches in ways that only God could orchestrate. (US 120 min) Wed/Thurs/Sat

FRAGILE WORLD—A lonely interior decorator with a history of delusions falls in love with a dashing stranger, and must determine whether or not he is real. (US 81 min) Tues/Fri/Sat

INSIDE OUT — After young Riley is uprooted from the Midwest and moved to San Francisco, her emotions - Joy, Fear, Anger, Disgust and Sadness - conflict on how best to navigate a new city. (US 95 min) Thurs/Sat/Sun

MCFARLAND — Jim White (Kevin Costner) moves his family to an Hispanic town after losing his football coaching job. He sees the students have a gift for running and tries to start a cross-country team. (US 129 min) Thurs/Fri/Sat

POLYCARP—A young slave girl is rescued by Polycarp and other 2nd century Christians. But when the Roman Proconsul demands allegiance to Caesar they must choose whom they will live and die for. (US 94 min) Wed/Sun

PRINCESS CUT—After being jilted by the love of her life, a Carolina farm girl begins a quest to find Mr. Right and discovers what true love is all about. (US 97 min) Tues/Thurs/Sat

WAR ROOM—When her marriage begins to fall apart, Elizabeth Jordan discovers the secret power of prayer and hopes it will transform her family. (US 120 min) Fri/Sat/Sun

SHORT FILMS 1 (90 min total) Sat/Sun

Dave Versus The Bully—Modern day David versus Goliath. (Canada)

Footprints in the Snow—A Canadian take on a classic poem. (Canada)

Meet the Warden—Warden at a day care. (Canada)

Micah's Supervlog: ÜberJealous—The futility of jealousy. (Canada)

National Geographic: Monster Fish—Examining a local legend. (US)

Pauline Hates The Prairies—An unexpected discovery. (Canada)

The Red Thunder—Discovering the beginning of an adventure. (US)

Screen Time—Who is the real friend anyway? (US)

Tiny Town—A small town with a big challenge. (US)

SHORT FILMS 2 (90 min total) Sat/Sun

Birdie's Song—Searching for freedom. (US)

Donya—Trying to recover. (Canada)

Doug—An imaginary friend. (UK)

Incognito—Friends from long ago. (UK)

Millworth—Life at a Winnipeg School. (Canada)

FEATURE DOCUMENTARIES

THE DROP BOX—A South Korea pastor takes in unwanted babies through an anonymous small hole in the wall of his house. (US 79 min) Sat/Sun

DUKALE'S DREAM—Hugh Jackman journeys to Ethiopia to discover first hand how to help a coffee farmer. Presented with World Vision. (US 70 min) Fri/Sun

HUMAN HARVEST: CHINA'S ILLEGAL ORGAN TRADE—Nobel Peace Prize nominees David Matas and David Kilgour investigate the organ harvesting trade in China and uncover one of the world's worst crimes against humanity. (Canada, 66 min) Sat/Sun

IRREPLACEABLE—Focus on the Family investigating the purpose of family and the role it can play in today's world. (USA, 110 min) Wed/Sun

MULLY—An abandoned and abused 6 year old Kenya boy works his way out of poverty to become a wealthy businessman. But then decides to sell everything he has, go into slums, and rescue street children through Mully Children's Family. (USA, 81 min) Fri/Sat/Sun

MYSTERY OF THE ARCTIC CAIRN—Polar explorers risk a modern journey through the Canadian arctic to be the first people to find a cairn of rocks built in 1898 by the first explorers to the area. (USA 54 min) Sat/Sun

SHORT DOCUMENTARIES (90min) Fri/Sat

Al Saamidoon—The challenges of faith in Iraq. (US)

That Mennonite Joke—Mennonites and their sense of humour. (Canada)

Vixen's Voyage—Living life on the open sea. (US)

ANIMATED FILMS

Cinderella: (US 105 min) Fri/Sat/Sun

Inside Out: (US 95 min) Thurs/Sat/Sun

SCREENPLAY COMPETITION

Screenplay finalists will be announced the beginning of February.



WWW.WINNIPEGFILMFESTIVAL.COM

WINNIPEG Real to Reel Film Festival

COOL, CLEAN, COMPELLING.

Feb. 16-21,
2016

All Welcome!

WinnipegFilmFestival.com



PROGRAM GUIDE

THE FESTIVAL IS BROUGHT TO YOU BY:

Herb & Erna Buller

Armin & Denise Martens

David and Chris Unruh/Century 21 Bachman & Assoc.

CHVN 95.1 FM

Regehr's Printing

River City Audio Visual

Focal Photography by SND

David Dueck/Mennonite Media Society

North Kildonan MB Church

Boge & Boge Consulting Engineers



follow us on
twitter

@WR2RFilmFest
#WR2R2015

WELCOME TO WR2R 2016!

Thank you for attending WR2R 2016! On behalf of the sponsors and the many volunteers, it is a privilege to welcome you to our 6th annual event. We invite you to be inspired and encouraged by the great films our filmmakers have submitted.

Paul H. Boge, Winnipeg Real to Reel Film Festival 2015 Coordinator
Paul@WinnipegFilmFestival.com, 204-471-0872

EVENT Cool, clean and compelling feature films, documentaries and shorts from around the world in a multi-theatre style format.

DATE Tuesday, February 16 to Sunday, February 21, 2016

TRAILERS Details and trailers available at:
www.WinnipegFilmFestival.com

LOCATION North Kildonan MB Church
1315 Gateway Road at Springfield
Winnipeg, MB R2G 1G5 Canada

CONCESSIONS Hot Dogs, Chili & Snacks available

TALKBACK Join us for discussions and Q & A after each film

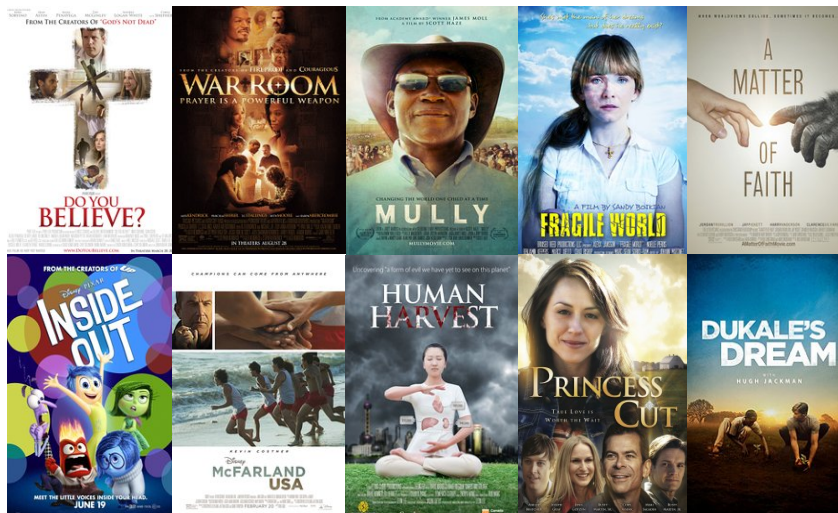
RATINGS Ratings will be available in early February

VOTING Please vote! Awards are based on audience votes.

STARS! *Filmmaker Present denotes director present

COST Single: \$5/day or \$15/festival pass
Family: \$10/day or \$25/festival pass
Proceeds used to support inner city initiatives.

[WWW.WINNIPEGFILMFESTIVAL.COM](http://www.WINNIPEGFILMFESTIVAL.COM)



	THEATER 1	THEATER 2	THEATER 3	THEATER 4
Tuesday, Feb 16				
7:00 pm	A Matter Of Faith (89 min)	Fragile world (81 min)	Princess Cut (97 min)	
Wed, Feb 17				
7:00 pm	Do You Believe (120 min)	Beyond the mask (103 min) Start Time: 7:10 pm	Polycarp (94 min)	Irreplaceable (110 min)
Thursday, Feb 18				
6:30 pm	Inside Out (95 min) Youth Night (All May Attend)	Do You Believe (120 min) Start Time: 6:45	Princess Cut (97 min)	McFarland (129 min) Start Time: 6:40
Friday, Feb 19				
6:30 pm	Mully (81 min)	McFarland (129min)	A Matter Of Faith (89 min)	Cinderella (105 min)
8:15 pm	War Room (129min)	Dukale's Dream (70 min)	Short Docs (90 min) *Filmmaker Present	Fragile world (81 min) 8:40 Start Time
Saturday, Feb 20				
1:30 pm	A Matter of Faith (89 min)	Princess Cut (97 min)	The Drop Box (79 min)	Beyond the Mask (103 min)
3:30 pm	PANEL DISCUSSION WITH FILMMAKERS IN THEATER 1			
4:00 pm	Do You Believe (120 min)	Short Films 1 (90 min) *Filmmaker present	Short Docs (90 min) *Filmmaker Present	Cinderella (105 min)
6:00 pm	Mully (81 min)	Short Films 2 (90 min) *Filmmaker present	Fragile World (81 min)	Inside Out (95 min)
8:00 pm	War Room (129 min)	Mystery of the Arctic Cairn (54 min)	Human Harvest: China's Illegal Organ Trade (66 min) *Filmmaker Present	McFarland (129 min)
Sunday, Feb 21				
1:30 pm	War Room (129 min)	Short Films 2 (90 min) *Filmmakers Present	Dukale's Dream (70 min)	The Drop Box (79 min)
3:30 pm	Mully (81 min) 3:45 Start Time	Short Films 1 (90 min) *Filmmaker present	Irreplaceable (110 min)	Cinderella (105 min)
5:30 pm	Inside Out (95 min)	Human Harvest: China's Illegal Organ Trade (66 min) *Filmmaker Present	Mystery of the Arctic Cairn (54 min)	Polycarp (94 min)
7:30 pm	Awards/Closing Ceremony (30 min)			